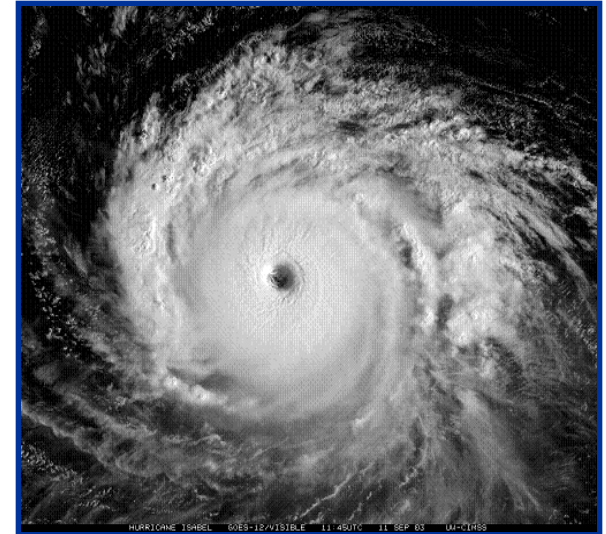




# Hurricane Preparedness



- Hurricane season 1 June – 30 November
- Best Safety advice is to be prepared:
  - Know evacuation routes
  - Keep tools, supplies, & first aid kit on-hand
  - Check flashlights and extra batteries
  - Portable, battery-operated radio & batteries
  - Non-electric can opener
  - Essential medicines





# Before the Storm



- **Discuss plan with family**
- **Update SafeHouse/SafeHaven**
- **Pay close attention to local weather reports on radio/TV/internet**
- **Secure/board house**
- **Ensure adequate supplies of food and water**
- **Store emergency contact numbers in your phone**
- **Have hard copy of current recall roster**
- **Emergency food and water (non-perishable)**
- **Keep fuel tanks full**





# Preparation for Evacuation



- **Stay informed on storm advisories**
- **Enact your family disaster plan**
- **Map out your route**
- **Secure your home**
- **Top off fuel tanks**
- **Get cash**
- **Notify family, friends, and supervisor of intentions**





# Hurricane Evac Driving



- **SAFE HOUSE (within 100 miles of MacDill)**
  - Live in an evacuation zone or in a manufactured or mobile home in the Tampa Bay region
  - CAT 1, 2, 3 storm
  
- **SAFE HAVEN (within 24 hours of recall)**
  - Local evacuation
  - Out of area evacuation
  - Total area evacuation may be recommended and all MacDill personnel directed to evacuate to a Safe Haven outside the Tampa Bay region
  - CAT 4 or 5 storm



# Hurricane Evac Driving



- **Stay informed on storm advisories**
- **Map out your route**
- **Take important documents with you**
- **Top off fuel tanks**
- **Be prepared for multi-day travel**
  - **Bring cash and credit cards**
  - **Have flashlights and extra batteries**
  - **First aid kit**
- **Notify family, friends, and supervisor of intentions**





# Hurricane Evac Driving



- Plan routes to avoid bridges (most close with winds of 50 kts)
- Hurricanes can produce winds of 75 mph and higher
- Watch out for flying debris
- Watch out for large trucks/RVs that will be very affected by wind







# Hurricane Evac Driving



- **Slow down!**
- **Use 3 second rule for following other cars**
- **Expect heavy wind and rain (how are your wipers?)**
- **Turn on lights any time in reduced visibility or if your wipers are on**
- **Flooding very possible**
  - **Never drive through moving water if you can't see the ground...1' of water can float many vehicles**
- **Don't drive over downed electrical wires**





# After the Hurricane



- **Know when to return:**
- **Continue to monitor NOAA Weather Radio**
- **DON'T RETURN UNTIL OFFICIALS SAY IT IS SAFE**
- **Expect extended period of rainfall and flooding**







# After the Hurricane



- **En-route on return:**
- **Avoid flooded roads and washed-out bridges**
- **Keep away from loose/dangling power lines**
  - Report them to the power company
- **Drive only as much as necessary**





# After the Hurricane



- **Back at the house:**
- **Stay out of buildings completely surrounded with water**
- **Wear protective clothing and be cautious when cleaning up**
  - This is not a good time to have to go to the hospital...
- **Watch for animals**
  - Keep a close eye on your pets so they don't get into anything they shouldn't
  - Be wary of other's pets that were left behind due to poor evac planning
- **Inspect home for damage**
  - Take pictures of home and contents for insurance





# After the Hurricane



- **Inside the house:**
- **Use flashlights, not candles**
  - If you have to use candles, burn them in a non-combustible container
- **Avoid drinking or preparing food w/tap water until sure not contaminated**
- **Check refrigerated food for spoilage**
  - Throw it out if there is any doubt
- **Minimize telephone usage to emergency/essential calls only**

